

# OCEAN NOVA

## Strong and Mighty · Active Adventure

Ocean Nova is a sturdy and nimble expedition vessel. This ship was built in Denmark in 1992 to sail the ice-choked waters of Greenland. It has ice-strengthened hull that is ideally suited for expedition travel in Antarctica. The ship was fully refurbished in 2006 and since then has benefitted from annual upgrades and improvements.

The ship's outside cabins offer three categories of accommodation: dedicated Single Cabins, Twin Cabins, and Triple Cabins. All cabins feature a picture window, a writing desk with chair, a wardrobe, individually controlled heating system, and a private bathroom with shower.

In addition to a glass-enclosed observation lounge and presentation room, Ocean Nova also has a spacious dining room, a bar, a library, a small gym, and an infirmary. The ship has a fleet of 7 Zodiac boats that are well suited for disembarking and wildlife watching.

### Specifications

**Passengers:**  
67 maximum on air-cruises

**Expedition Staff & Crew:**  
46

**Lifeboats:**  
2, fully enclosed, capacity of 110 (in addition to 4 life rafts, capacity of 100)

**Length:**  
73.0 m

**Breadth:**  
11.0 m

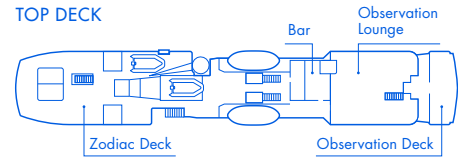
**Draft:**  
3.7 m

**Propulsion:**  
Diesel engines,  
2,000-horsepower

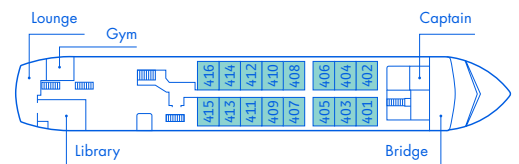
**Ice Class:**  
1B, EO (Hull Ice 1A)

**Cruising Speed:**  
12 knots in open water

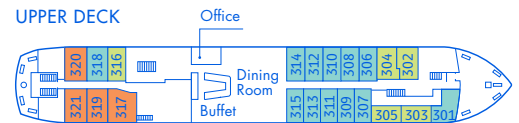
#### TOP DECK



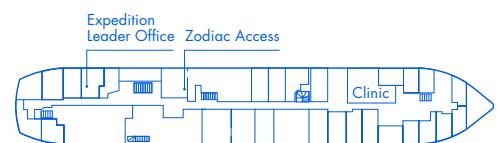
#### BRIDGE DECK



#### UPPER DECK



#### MAIN DECK

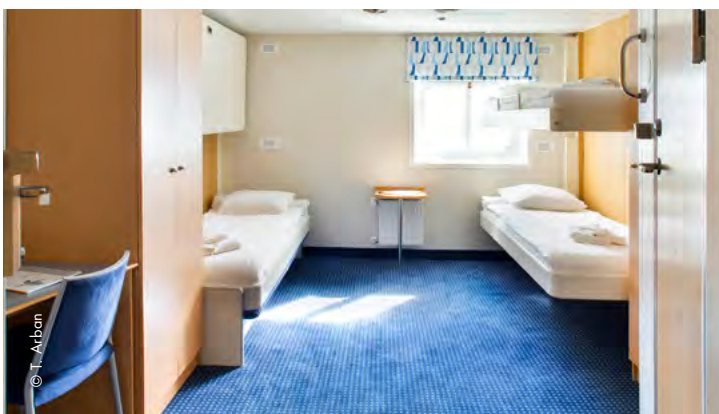


### Cabins

Category	Average size	Details
● Single Cabin	87 sq. ft. 8 sq. m	One lower single bed
● Twin Cabin	106 sq. ft. 10 sq. m	Two lower beds
● Triple Cabin	150 sq. ft. 14 sq. m	Two lower beds and one upper bed



© N. Glidemeister



© T. Arban